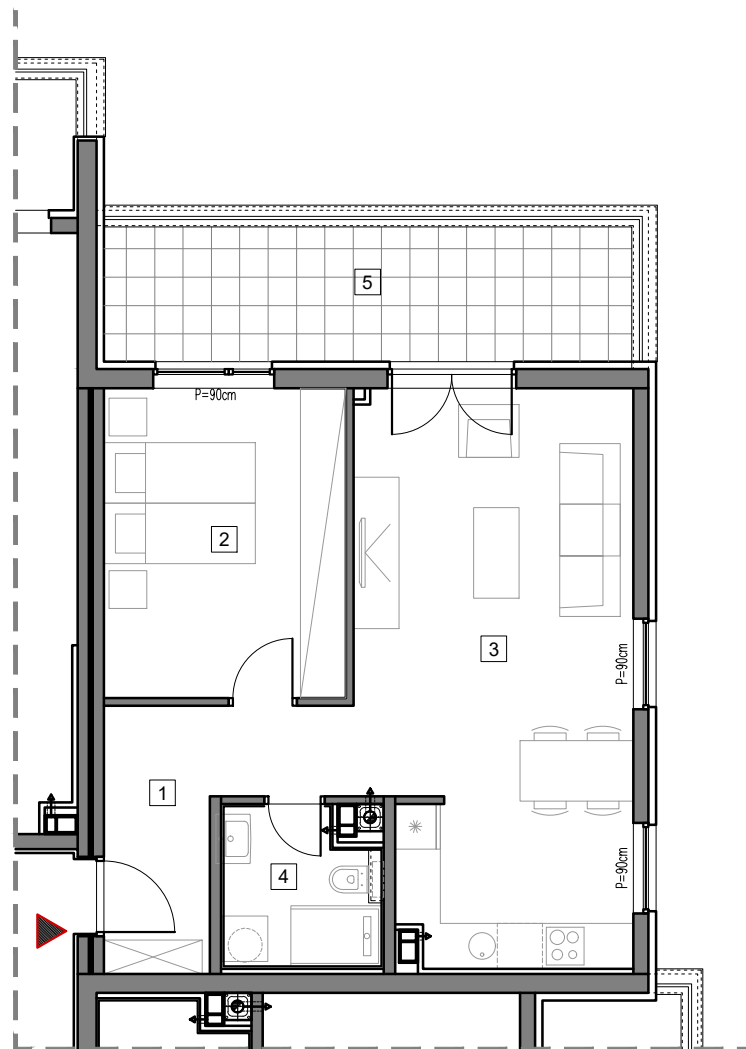


4. SPRAT



## STAMBENO-POSLOVNI OBJEKAT "DOBRINJA"

### STAN C406

1	HODNIK	7.0m <sup>2</sup>
2	SOBA	12.9m <sup>2</sup>
3	DNEVNA SOBA, KUHINJA I TRPEZARIJA	26.5m <sup>2</sup>
4	KUPATILO	4.1m <sup>2</sup>
5	LOĐA (75%)	9.3m <sup>2</sup>

UKUPNO 59.8m<sup>2</sup>

