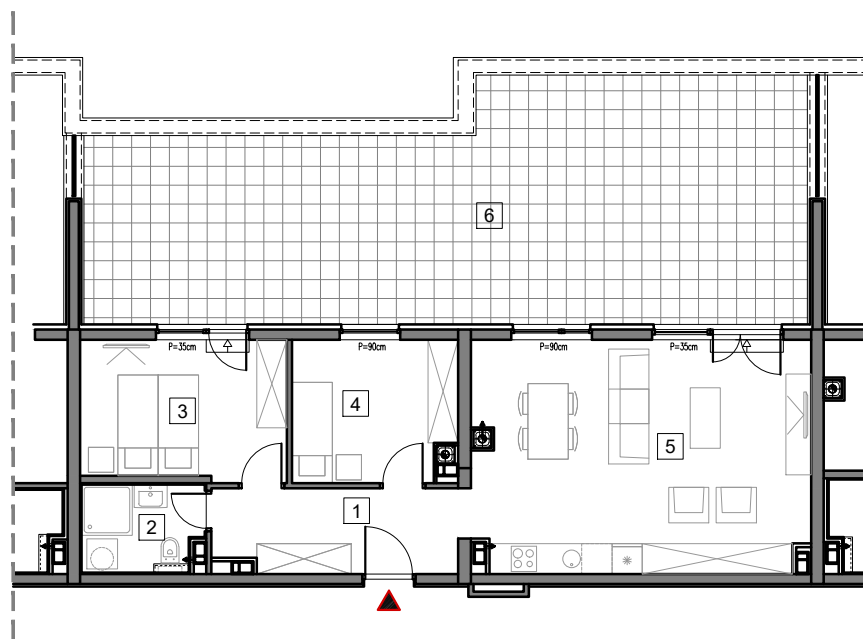


5. SPRAT



STAMBENO-POSLOVNI OBJEKAT "DOBRINJA"

STAN B503

1	HOL	8.1m ²
2	KUPATILO	4.0m ²
3	SOBA1	11.1m ²
4	SOBA2	8.8m ²
5	DNEVNA SOBA, KUHINJA I TRPEZARIJA	30.3m ²
6	TERASA (25%)	15.4m ²

UKUPNO 77.7m²

0 5m

BUTMIR