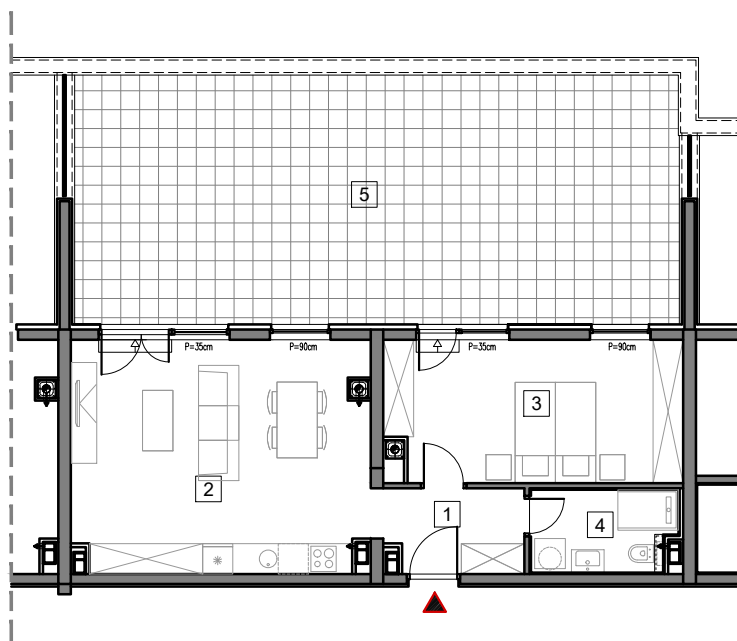


5. SPRAT



## STAMBENO-POSLOVNI OBJEKAT "DOBRINJA"

### STAN B502

1	HOL	4.7m <sup>2</sup>
2	DNEVNA SOBA, KUHINJA I TRPEZARIJA	26.6m <sup>2</sup>
3	SOBA	16.3m <sup>2</sup>
4	KUPATILO	4.6m <sup>2</sup>
5	TERASA (25%)	14.8m <sup>2</sup>

UKUPNO 67.0m<sup>2</sup>

0 5m

# BUTMIR