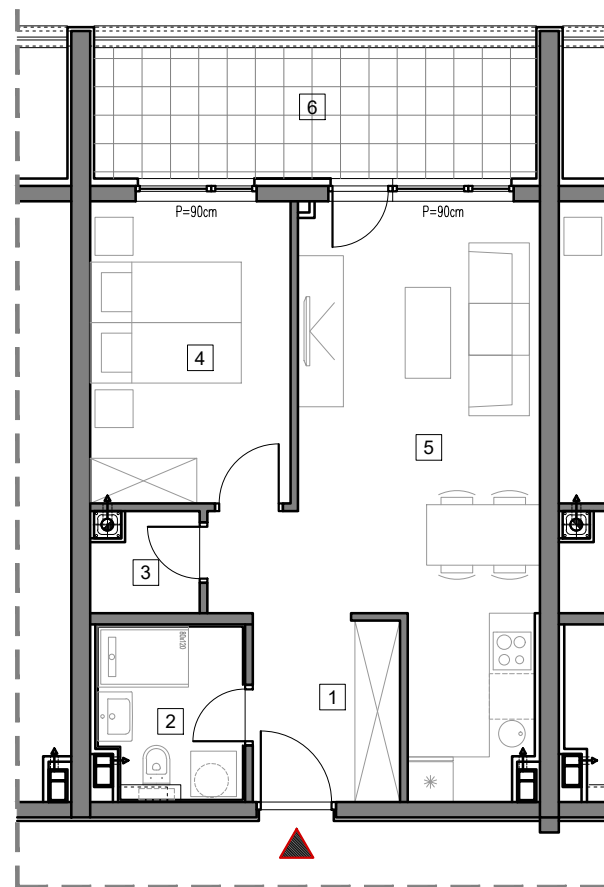


4. SPRAT



## STAMBENO-POSLOVNI OBJEKAT "DOBRINJA"

### STAN B407

1	HOL	4.7m <sup>2</sup>
2	KUPATILO	4.2m <sup>2</sup>
3	OSTAVA	1.7m <sup>2</sup>
4	SOBA 1	10.4m <sup>2</sup>
5	DNEVNA SOBA, KUHINJA I TRPEZARIJA	22.7m <sup>2</sup>
6	LOĐA (75%)	7.6m <sup>2</sup>

UKUPNO 51.3m<sup>2</sup>



# BUTMIR