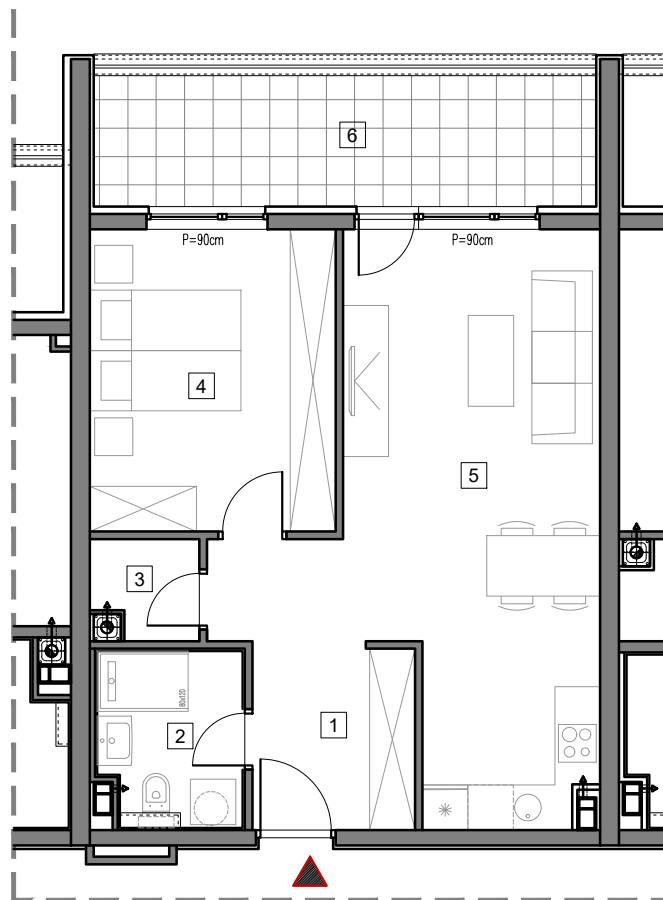


4. SPRAT



STAMBENO-POSLOVNI OBJEKT "DOBRINJA"

STAN B406

| | | |
|---|-----------------------------------|--------------------|
| 1 | HOL | 5.2m ² |
| 2 | KUPATILO | 4.3m ² |
| 3 | OSTAVA | 1.7m ² |
| 4 | SOBA | 12.8m ² |
| 5 | DNEVNA SOBA, KUHINJA I TRPEZARIJA | 26.1m ² |
| 6 | LOĐA (75%) | 8.6m ² |

UKUPNO 58.7m²

