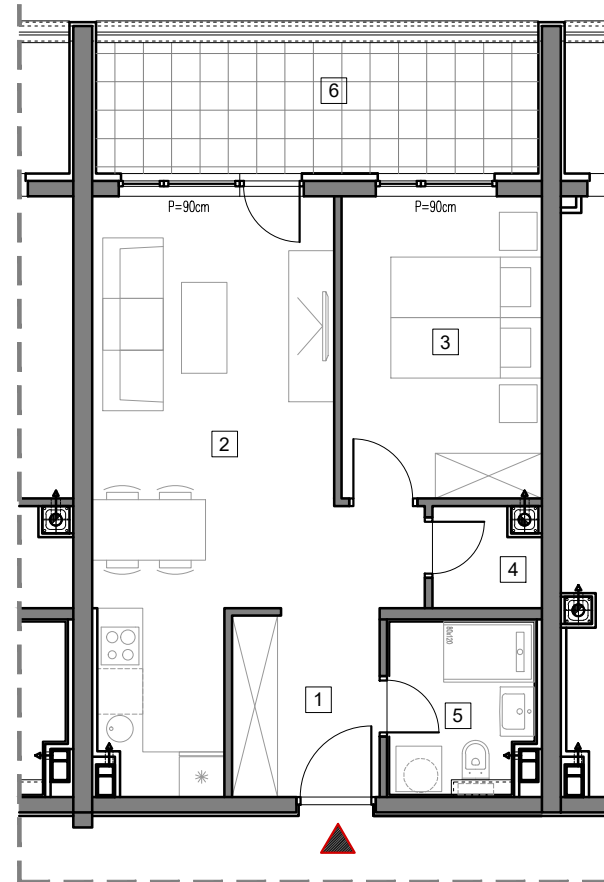


4. SPRAT



STAMBENO-POSLOVNI OBJEKAT "DOBRINJA"

STAN B403

| | | |
|---|-----------------------------------|--------------------|
| 1 | HOL | 4.7m ² |
| 2 | DNEVNA SOBA, KUHINJA I TRPEZARIJA | 22.7m ² |
| 3 | SOBA | 10.4m ² |
| 4 | OSTAVA | 1.7m ² |
| 5 | KUPATILO | 4.2m ² |
| 6 | LOĐA (75%) | 7.6m ² |

UKUPNO 51.3m²



BUTMIR