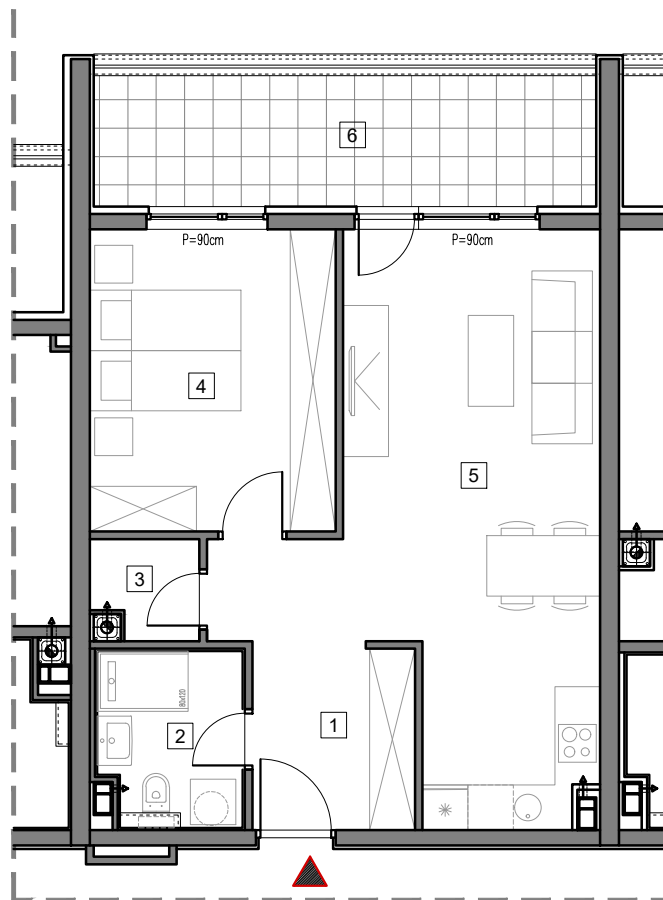


2. SPRAT



STAMBENO-POSLOVNI OBJEKAT "DOBRINJA"

STAN B206

1	HOL	5.2m ²
2	KUPATILO	4.3m ²
3	OSTAVA	1.7m ²
4	SOBA	12.8m ²
5	DNEVNA SOBA, KUHINJA I TRPEZARIJA	26.1m ²
6	LOĐA (75%)	8.6m ²

UKUPNO 58.7m²



BUTMIR