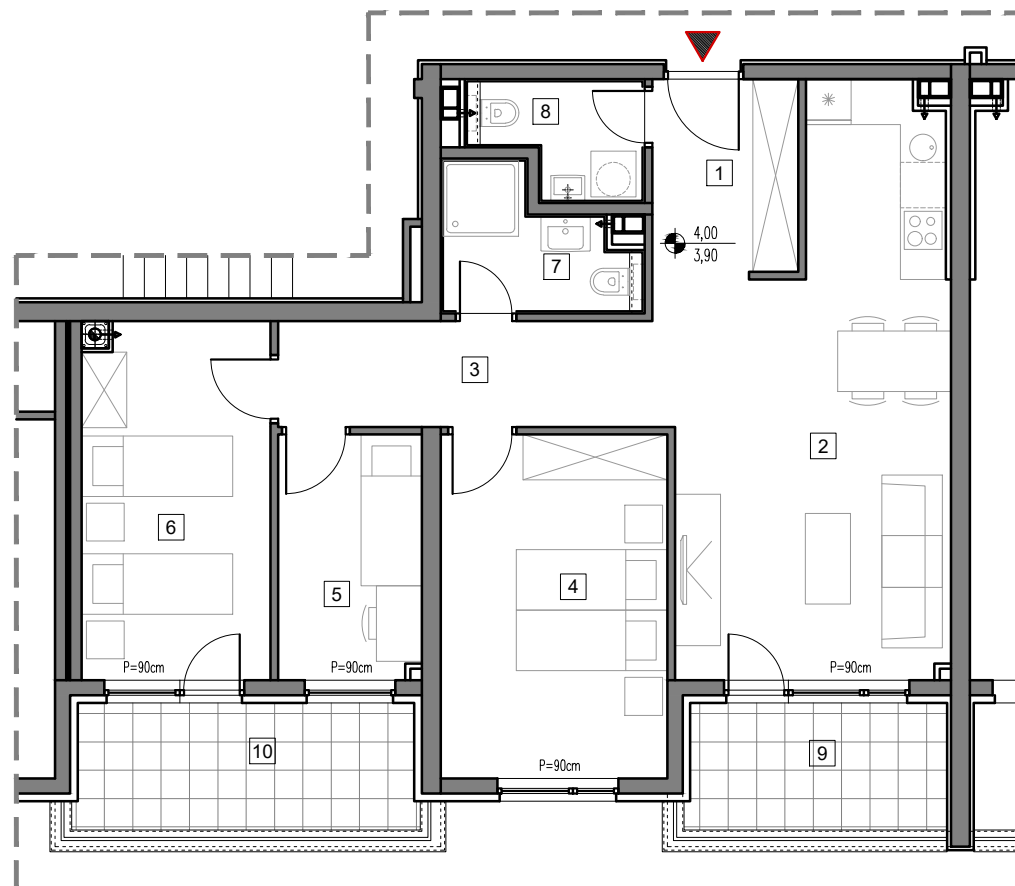


1. SPRAT



## STAMBENO-POSLOVNI OBJEKAT "DOBRINJA"

### STAN B109

1	HOL	4.9m <sup>2</sup>
2	DNEVNA SOBA, KUHINJA I TRPEZARIJA	24.0m <sup>2</sup>
3	HODNIK	6.9m <sup>2</sup>
4	SOBA 1	13.4m <sup>2</sup>
5	SOBA 2	6.0m <sup>2</sup>
6	SOBA 3	11.5m <sup>2</sup>
7	KUPATILO	3.9m <sup>2</sup>
8	WC	3.0m <sup>2</sup>
9	LOĐA 1 (75%)	4.3m <sup>2</sup>
10	LOĐA 2 (75%)	5.7m <sup>2</sup>

UKUPNO 83.6m<sup>2</sup>



# BUTMIR