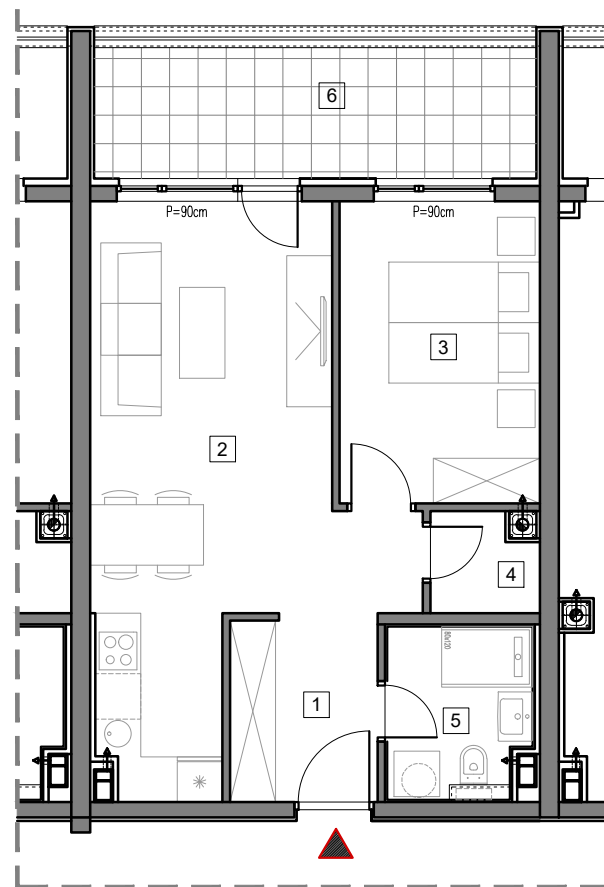


1. SPRAT



STAMBENO-POSLOVNI OBJEKAT "DOBRINJA"

STAN B103

1	HOL	4.7m ²
2	DNEVNA SOBA, KUHINJA I TRPEZARIJA	22.7m ²
3	SOBA	10.4m ²
4	OSTAVA	1.7m ²
5	KUPATILO	4.2m ²
6	LOĐA (75%)	7.6m ²

UKUPNO 51.3m²

