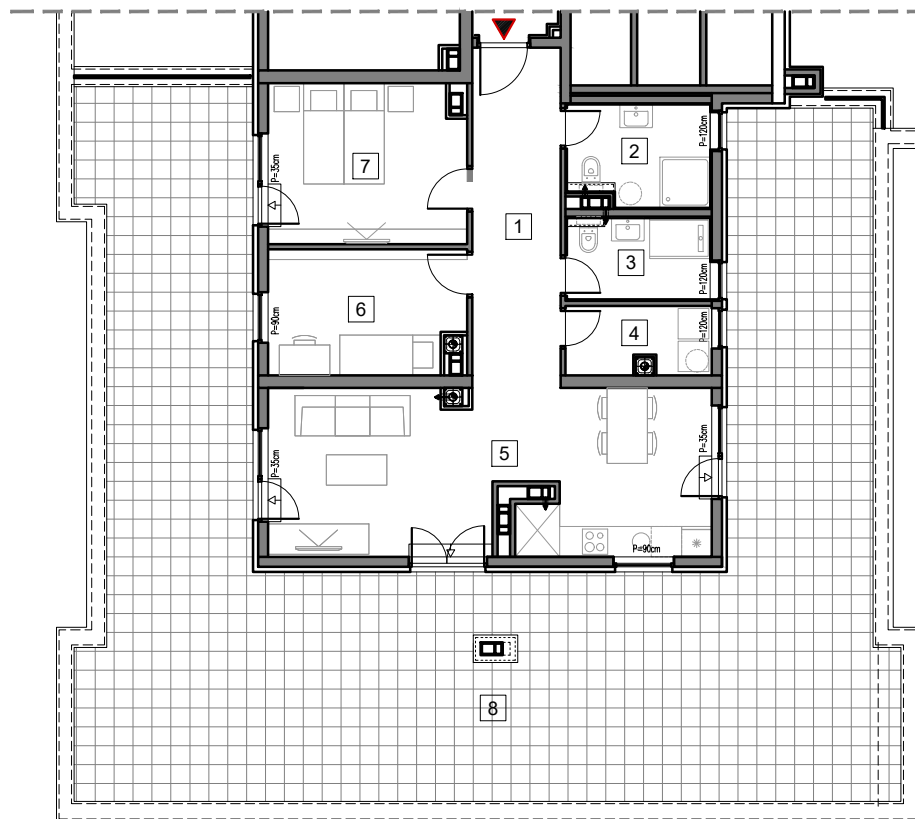


5. SPRAT



## STAMBENO-POSLOVNI OBJEKAT "DOBRINJA"

### STAN A501

1	HODNIK	11.6m <sup>2</sup>
2	KUPATILO 1	5.5m <sup>2</sup>
3	KUPATILO 2	4.6m <sup>2</sup>
4	OSTAVA	3.7m <sup>2</sup>
5	DNEVNA SOBA, KUHNJA I TRPEZARIJA	27.3m <sup>2</sup>
6	SOBA 1	9.2m <sup>2</sup>
7	SOBA 2	12.1m <sup>2</sup>
8	TERASA (25%)	32.1m <sup>2</sup>

UKUPNO 106.1m<sup>2</sup>



# BUTMIR