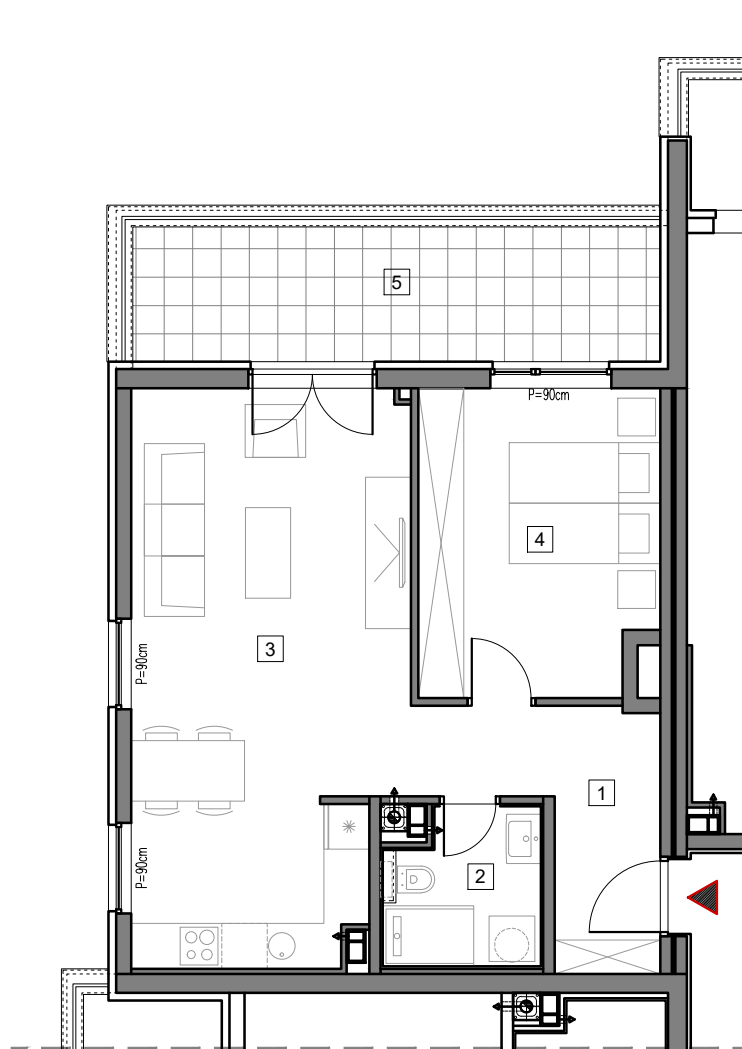


4. SPRAT



STAMBENO-POSLOVNI OBJEKAT "DOBRINJA"

STAN A405

1	HODNIK	6.9m ²
2	KUPATILO	4.1m ²
3	DNEVNA SOBA, KUHINJA I TRPEZARIJA	26.5m ²
4	SOBA	12.5m ²
5	LOĐA (75%)	9.3m ²

UKUPNO 59.3m²



BUTMIR