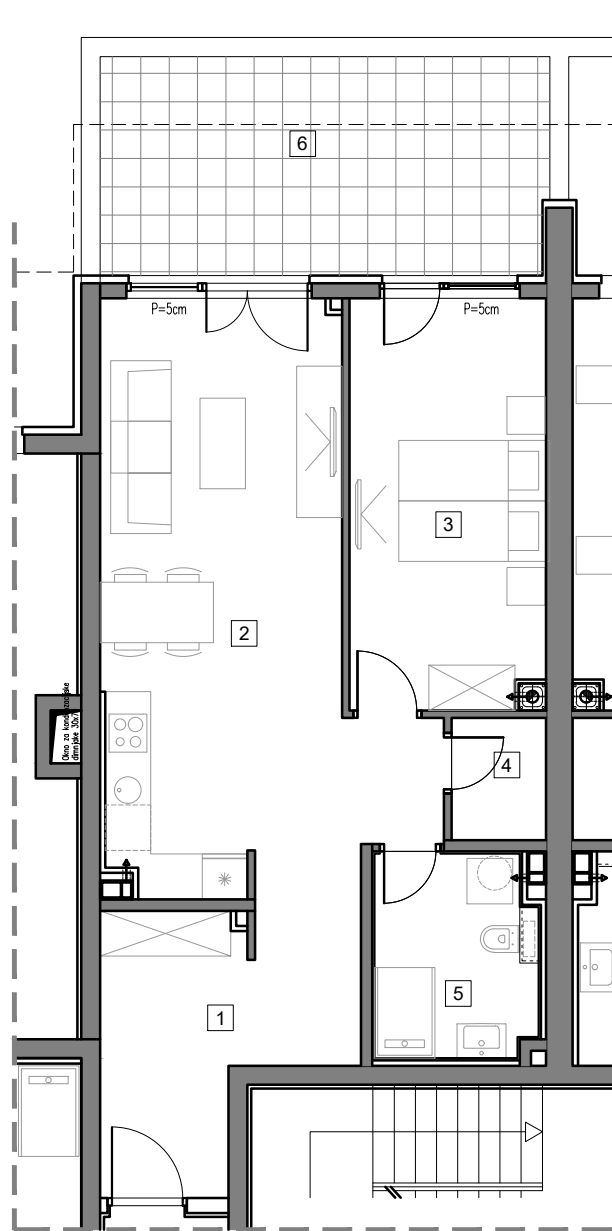


PRIZEMLJE



## STAMBENO-POSLOVNI OBJEKAT "DOBRINJA"

### STAN A02

1	HOL	10.8m <sup>2</sup>
2	DNEVNA SOBA, KUHINJA I TRPEZARIJA	26.1m <sup>2</sup>
3	SOBA	13.8m <sup>2</sup>
4	OSTAVA	1.9m <sup>2</sup>
5	KUPATILO	5.6m <sup>2</sup>
6	TERASA	10.2m <sup>2</sup>

UKUPNO 68.4m<sup>2</sup>

# BUTMIR