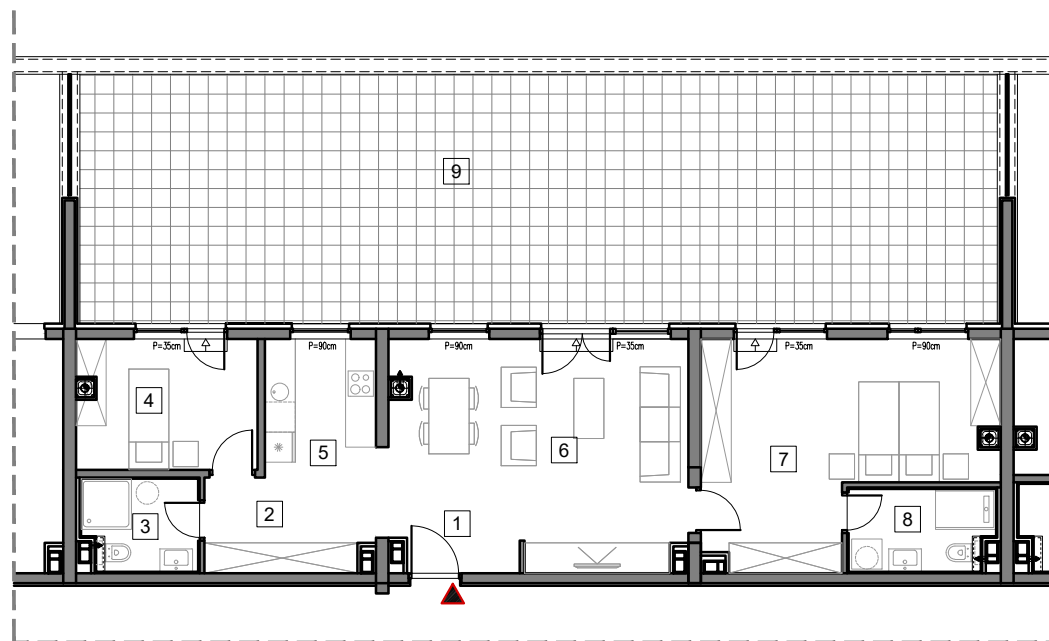




5. SPRAT



STAMBENO-POSLOVNI OBJEKAT "DOBRINJA"

STAN C502

1	HOL	4.5m ²
2	HODNIK	6.4m ²
3	KUPATILO 1	4.1m ²
4	SOBA 1	9.0m ²
5	KUHINJA	6.1m ²
6	DNEVNA SOBA I TRPEZARIJA	22.2m ²
7	SOBA 2	21.3m ²
8	KUPATILO 2	4.6m ²
9	TERASA (25%)	22.5m ²

UKUPNO 100.7m²

