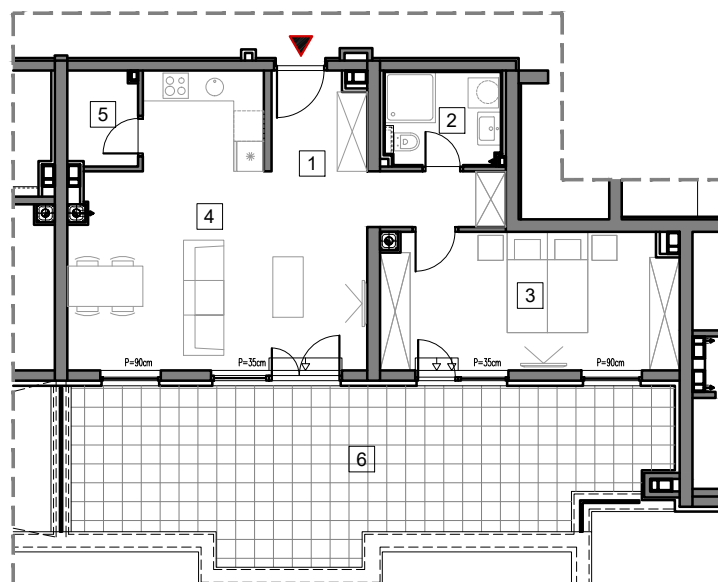


5. SPRAT



## STAMBENO-POSLOVNI OBJEKAT "DOBRINJA"

### STAN C501

1	HOL	8.5m <sup>2</sup>
2	KUPATILO	4.2m <sup>2</sup>
3	SOBA	15.7m <sup>2</sup>
4	DNEVNA SOBA, KUHINJA I TRPEZARIJA	25.6m <sup>2</sup>
5	OSTAVA	2.5m <sup>2</sup>
6	TERASA (25%)	8.7m <sup>2</sup>

UKUPNO 65.2m<sup>2</sup>

0 5m

# BUTMIR