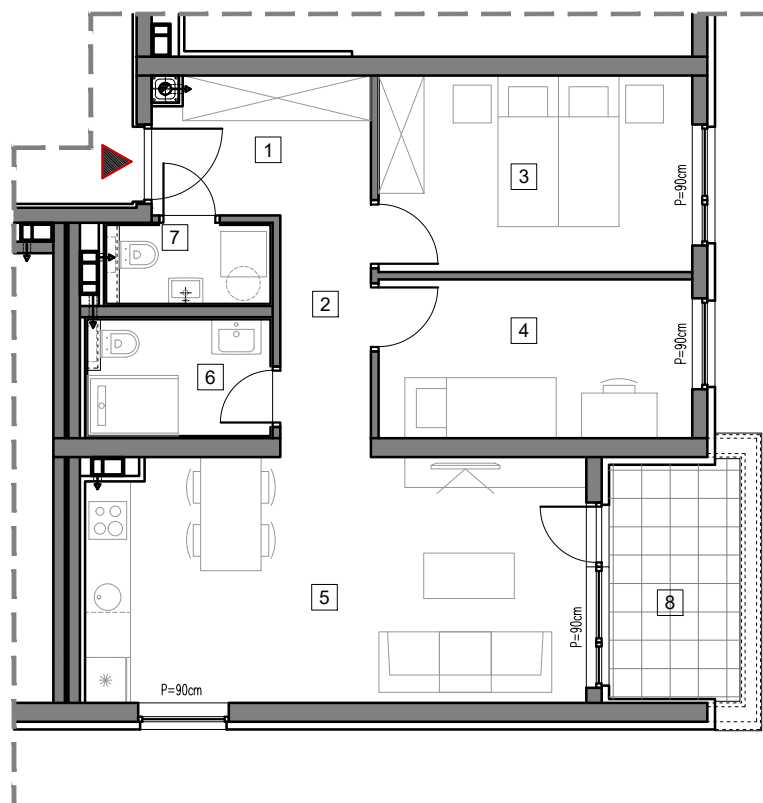


4. SPRAT



STAMBENO-POSLOVNI OBJEKAT "DOBRINJA"

STAN C409

1	HOL	5.1m ²
2	HODNIK	3.8m ²
3	SOBA 1	10.6m ²
4	SOBA 2	8.5m ²
5	DNEVNA SOBA, KUHINJA I TRPEZARIJA	21.0m ²
6	KUPATILO	3.8m ²
7	WC	2.3m ²
8	LOĐA (75%)	4.1m ²

UKUPNO 59.2m²

BUTMIR