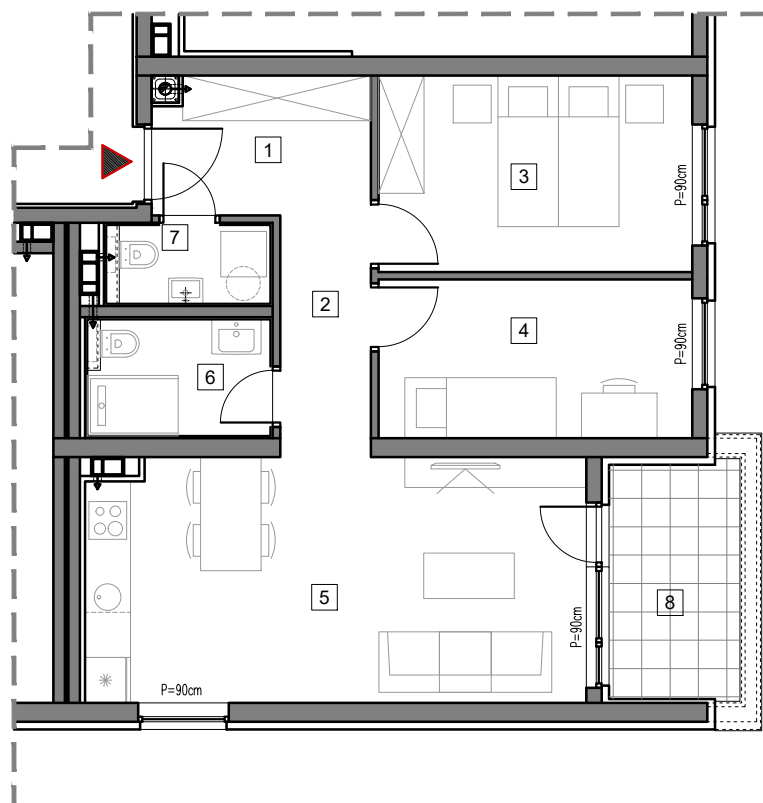


3. SPRAT



## STAMBENO-POSLOVNI OBJEKAT "DOBRINJA"

### STAN C309

1	HOL	5.1m <sup>2</sup>
2	HODNIK	3.8m <sup>2</sup>
3	SOBA 1	10.6m <sup>2</sup>
4	SOBA 2	8.5m <sup>2</sup>
5	DNEVNA SOBA, KUHINJA I TRPEZARIJA	21.0m <sup>2</sup>
6	KUPATILO	3.8m <sup>2</sup>
7	WC	2.3m <sup>2</sup>
8	LOĐA (75%)	4.1m <sup>2</sup>

UKUPNO 59.2m<sup>2</sup>



# BUTMIR