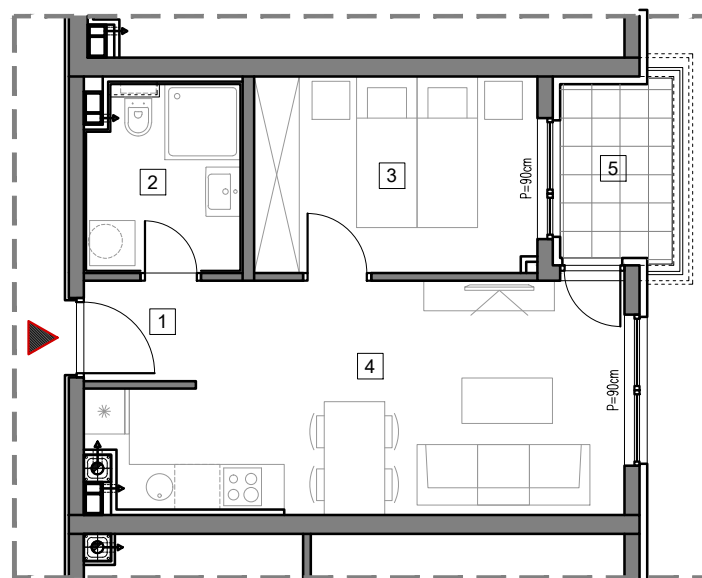


3. SPRAT



STAMBENO-POSLOVNI OBJEKAT "DOBRINJA"

STAN C308

| | | |
|---|-----------------------------------|--------------------|
| 1 | HOL | 2.0m ² |
| 2 | KUPATILO | 4.9m ² |
| 3 | SOBA | 9.5m ² |
| 4 | DNEVNA SOBA, KUHINJA I TRPEZARIJA | 19.2m ² |
| 5 | LOĐA (75%) | 2.6m ² |

UKUPNO 38.2m²



BUTMIR