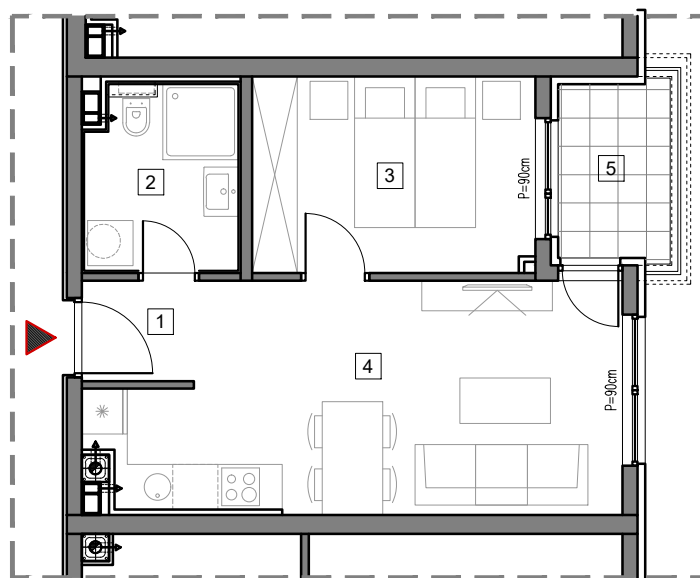


2. SPRAT



## STAMBENO-POSLOVNI OBJEKAT "DOBRINJA"

### STAN C208

1	HOL	2.0m <sup>2</sup>
2	KUPATILO	4.9m <sup>2</sup>
3	SOBA	9.5m <sup>2</sup>
4	DNEVNA SOBA, KUHINJA I TRPEZARIJA	19.2m <sup>2</sup>
5	LOĐA (75%)	2.6m <sup>2</sup>

UKUPNO 38.2m<sup>2</sup>



# BUTMIR