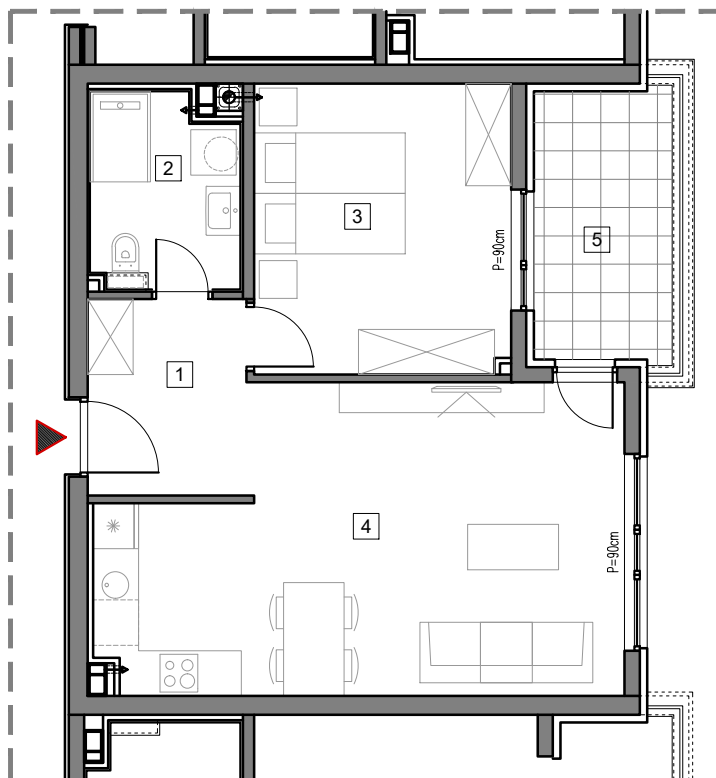


2. SPRAT



STAMBENO-POSLOVNI OBJEKAT
"DOBRINJA"

STAN C207

1	HOL	5.3m ²
2	KUPATILO	4.9m ²
3	SOBA	12.8m ²
4	DNEVNA SOBA, KUHINJA I TRPEZARIJA	25.4m ²
5	LOĐA (75%)	4.9m ²

UKUPNO 53.3m²



BUTMIR