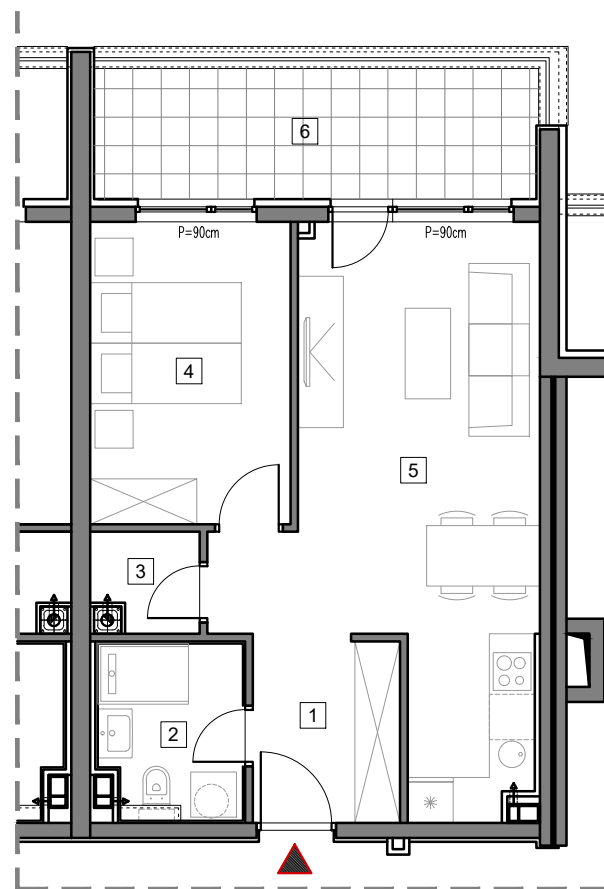


2. SPRAT



STAMBENO-POSLOVNI OBJEKAT "DOBRINJA"

STAN C205

1	HOL	4.7m ²
2	KUPATILO	4.3m ²
3	OSTAVA	1.7m ²
4	SOBA	10.4m ²
5	DNEVNA SOBA, KUHINJA I TRPEZARIJA	22.7m ²
6	LOĐA (75%)	7.7m ²

UKUPNO 51.5m²



BUTMIR