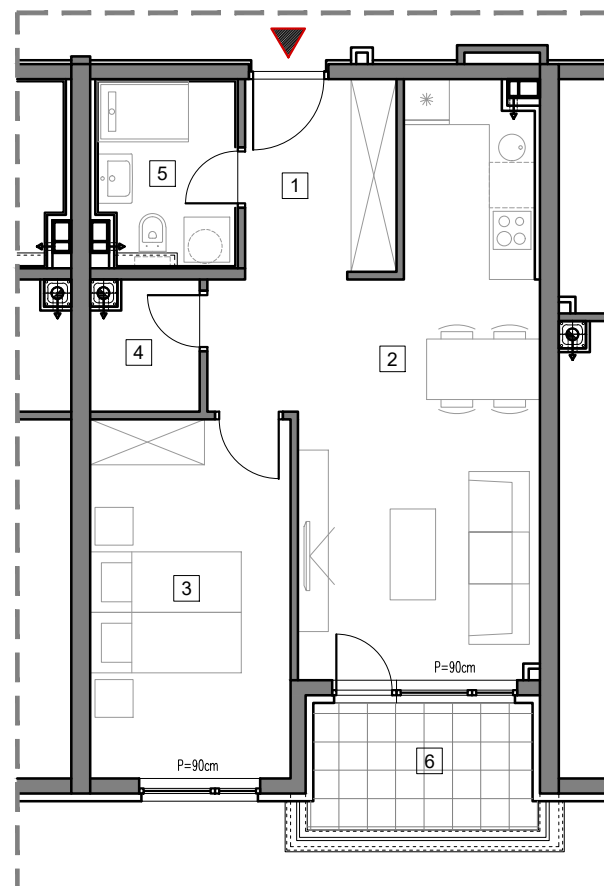


2. SPRAT



## STAMBENO-POSLOVNI OBJEKAT "DOBRINJA"

### STAN C202

1	HOL	5.1m <sup>2</sup>
2	DNEVNA SOBA, KUHINJA I TRPEZARIJA	23.0m <sup>2</sup>
3	SOBA	12.4m <sup>2</sup>
4	OSTAVA	2.3m <sup>2</sup>
5	KUPATILO	4.3m <sup>2</sup>
6	LOĐA (75%)	3.7m <sup>2</sup>

UKUPNO 50.8m<sup>2</sup>



# BUTMIR