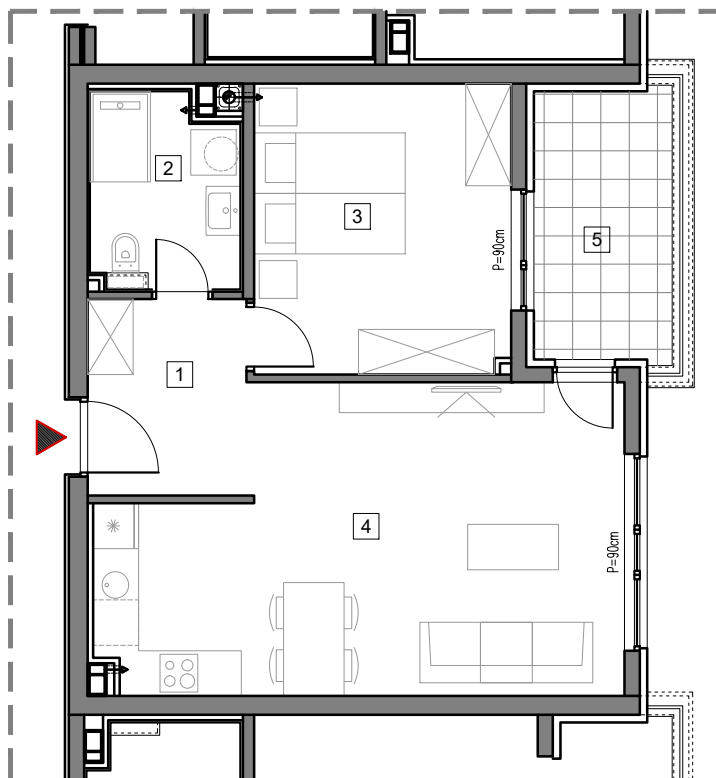


1. SPRAT



## STAMBENO-POSLOVNI OBJEKAT "DOBRINJA"

### STAN C107

1	HOL	5.3m <sup>2</sup>
2	KUPATILO	4.9m <sup>2</sup>
3	SOBA	12.8m <sup>2</sup>
4	DNEVNA SOBA, KUHINJA I TRPEZARIJA	25.4m <sup>2</sup>
5	LOĐA (75%)	4.9m <sup>2</sup>

UKUPNO 53.3m<sup>2</sup>



# BUTMIR