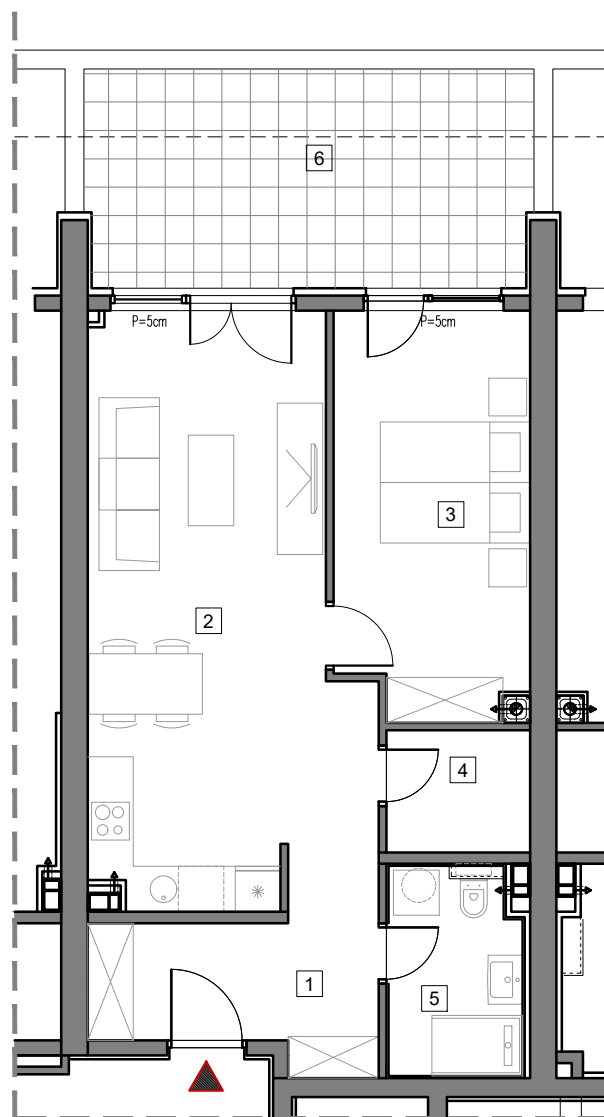


PRIZEMLJE



## STAMBENO-POSLOVNI OBJEKT "DOBRINJA"

### STAN C04

1	HOL	7.7m <sup>2</sup>
2	DNEVNA SOBA, KUHINJA I TRPEZARIJA	25.4m <sup>2</sup>
3	SOBA	13.3m <sup>2</sup>
4	OSTAVA	3.0m <sup>2</sup>
5	KUPATILO	4.8m <sup>2</sup>
6	TERASA	10.1m <sup>2</sup>

UKUPNO 64.3m<sup>2</sup>

■ PRODANO ■ REZERVISANO

# BUTMIR

0 5m