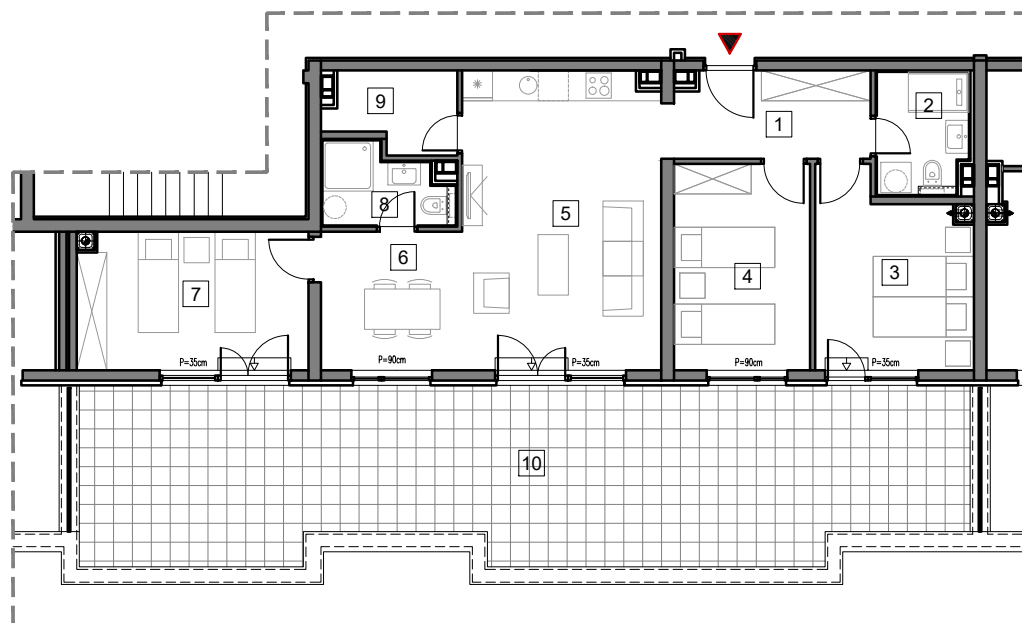




5. SPRAT



## STAMBENO-POSLOVNI OBJEKAT "DOBRINJA"

### STAN B504

1	HOL	6.7m <sup>2</sup>
2	KUPATILO 1	4.3m <sup>2</sup>
3	SOBA 1	10.9m <sup>2</sup>
4	SOBA 2	10.9m <sup>2</sup>
5	DNEVNA SOBA I KUHINJA	23.0m <sup>2</sup>
6	TRPEZARIJA	7.7m <sup>2</sup>
7	SOBA 3	12.3m <sup>2</sup>
8	KUPATILO 2	3.6m <sup>2</sup>
9	OSTAVA	3.6m <sup>2</sup>
10	TERASA (25%)	14.8m <sup>2</sup>

UKUPNO 97.8m<sup>2</sup>

0 5m

# BUTMIR