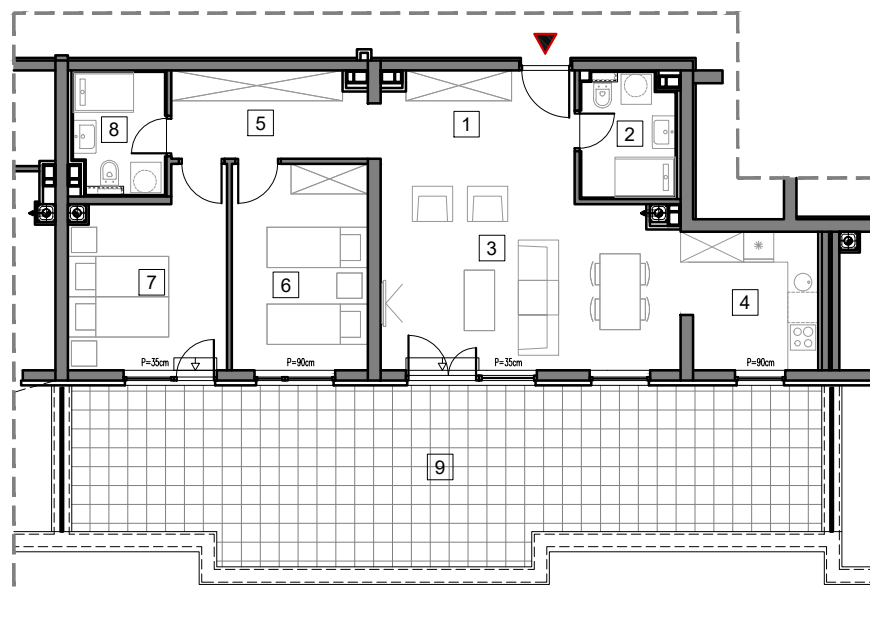




5. SPRAT



STAMBENO-POSLOVNI OBJEKAT
"DOBRINJA"

STAN B501

1	HOL	6.4m ²
2	KUPATILO 1	4.5m ²
3	DNEVNA SOBA I TRPEZARIJA	23.0m ²
4	KUHINJA	6.7m ²
5	HODNIK	6.7m ²
6	SOBA 1	10.9m ²
7	SOBA 2	10.9m ²
8	KUPATILO 2	4.3m ²
9	TERASA (25%)	11.9m ²

UKUPNO 85.3m²

0 5m

BUTMIR