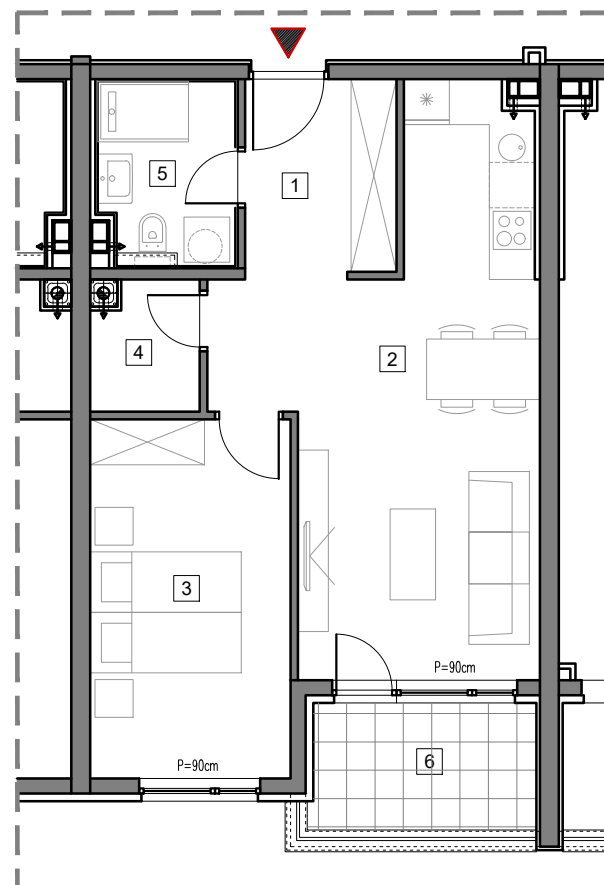


4. SPRAT



STAMBENO-POSLOVNI OBJEKAT "DOBRINJA"

STAN B402

1	HOL	5.1m ²
2	DNEVNA SOBA, KUHINJA I TRPEZARIJA	23.1m ²
3	SOBA	12.4m ²
4	OSTAVA	2.3m ²
5	KUPATILO	4.3m ²
6	LOĐA (75%)	3.7m ²

UKUPNO 50.9m²

0 5m

BUTMIR