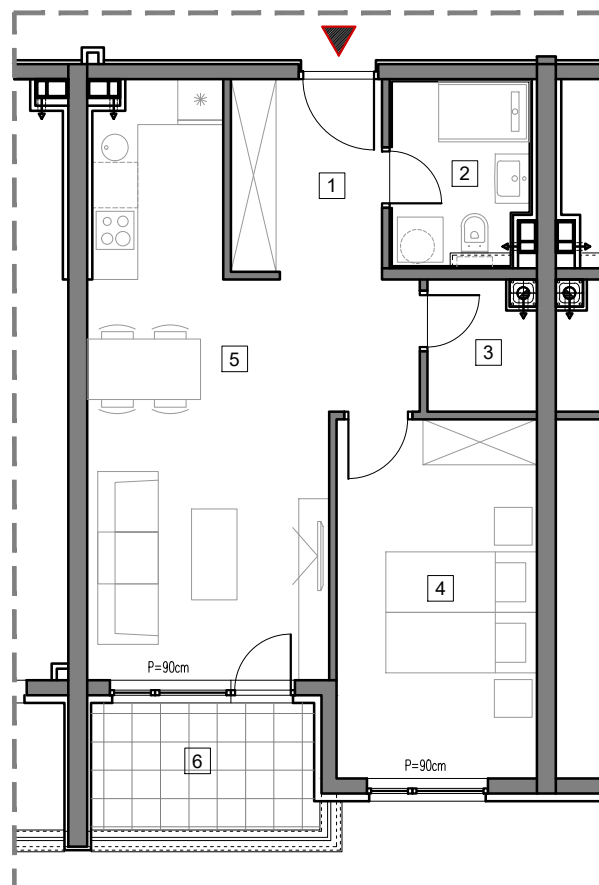


2. SPRAT



## STAMBENO-POSLOVNI OBJEKAT "DOBRINJA"

### STAN B208

1	HOL	5.1m <sup>2</sup>
2	KUPATILO	4.3m <sup>2</sup>
3	OSTAVA	2.3m <sup>2</sup>
4	SOBA	12.4m <sup>2</sup>
5	DNEVNA SOBA, KUHINJA I TRPEZARIJA	23.1m <sup>2</sup>
6	LOĐA (75%)	3.7m <sup>2</sup>

UKUPNO 50.9m<sup>2</sup>



# BUTMIR