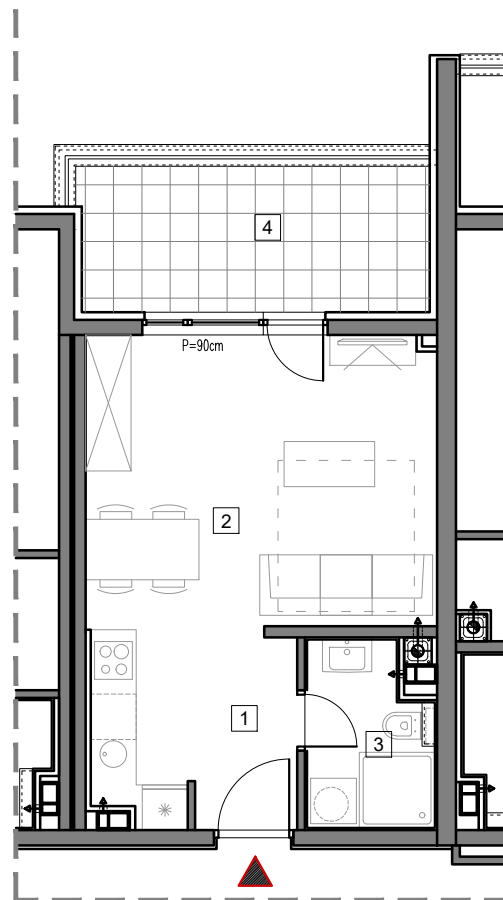


2. SPRAT



STAMBENO-POSLOVNI OBJEKAT "DOBRINJA"

STAN B205

1	HOL	3.3m ²
2	DNEVNA SOBA, KUHINJA I TRPEZARIJA	21.2m ²
3	KUPATILO	3.8m ²
4	LOĐA (75%)	6.7m ²

UKUPNO 35.0m²

