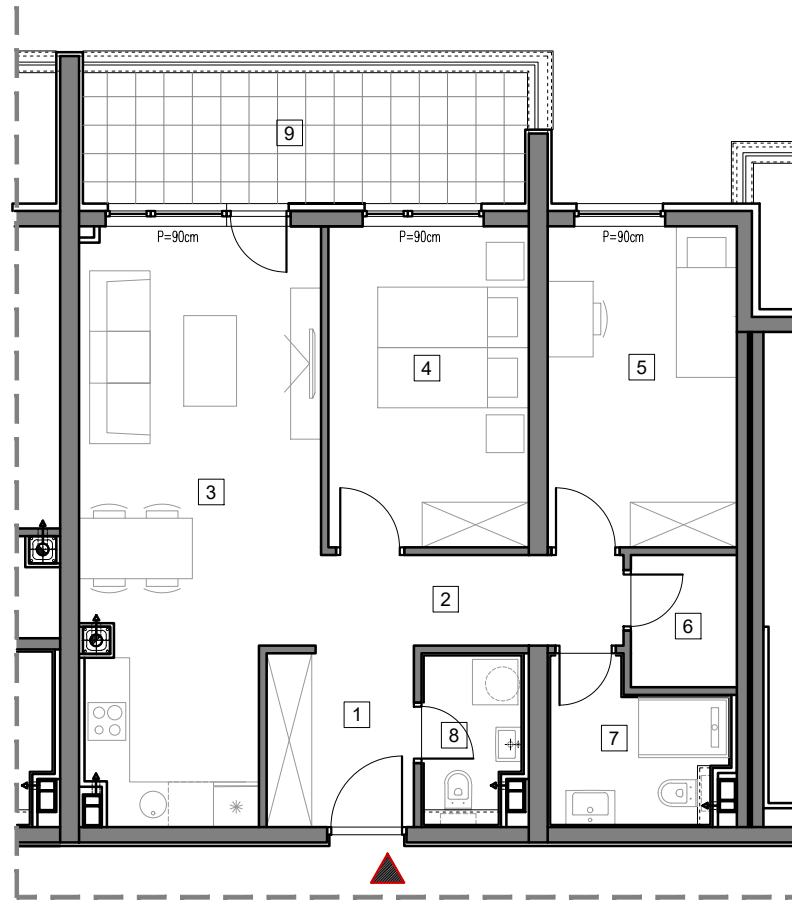


2. SPRAT



## STAMBENO-POSLOVNI OBJEKAT "DOBRINJA"

### STAN B204

1	HOL	4.5m <sup>2</sup>
2	HODNIK	5.2m <sup>2</sup>
3	DNEVNA SOBA, KUHINJA I TRPEZARIJA	22.0m <sup>2</sup>
4	SOBA 1	11.1m <sup>2</sup>
5	SOBA 2	10.4m <sup>2</sup>
6	OSTAVA	2.4m <sup>2</sup>
7	KUPATILO	4.4m <sup>2</sup>
8	WC	2.7m <sup>2</sup>
9	LOĐA (75%)	7.6m <sup>2</sup>

UKUPNO 70.3m<sup>2</sup>



# BUTMIR