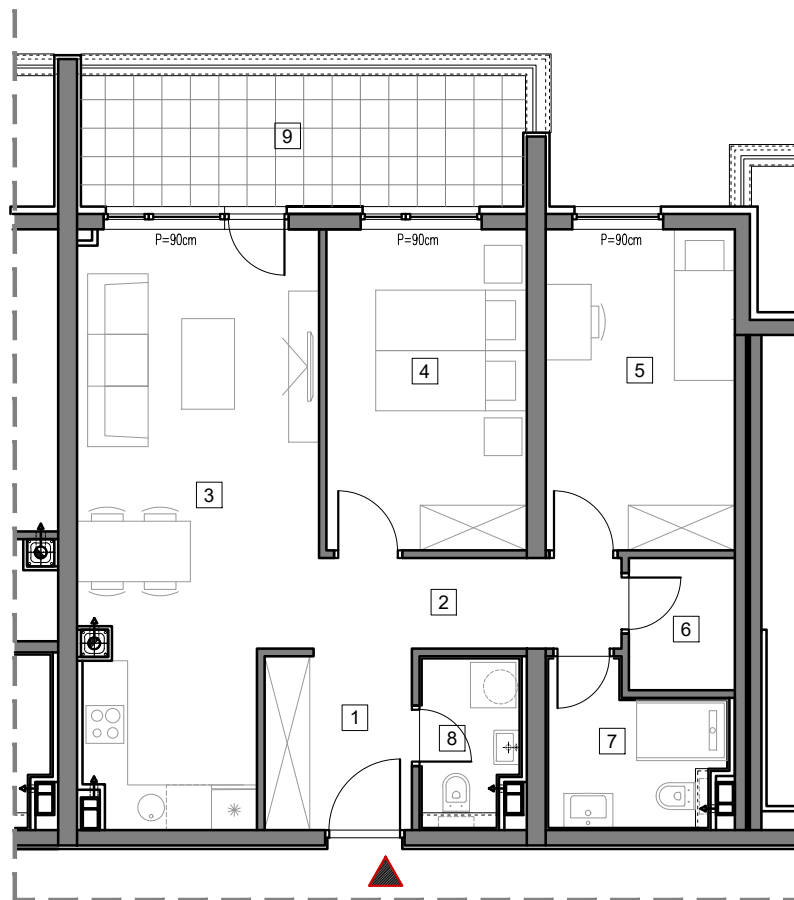


1. SPRAT



STAMBENO-POSLOVNI OBJEKAT "DOBRINJA"

STAN B104

1	HOL	4.5m ²
2	HODNIK	5.2m ²
3	DNEVNA SOBA, KUHINJA I TRPEZARIJA	22.0m ²
4	SOBA 1	11.1m ²
5	SOBA 2	10.4m ²
6	OSTAVA	2.4m ²
7	KUPATILO	4.4m ²
8	WC	2.7m ²
9	LOĐA (75%)	7.6m ²

UKUPNO 70.3m²



BUTMIR