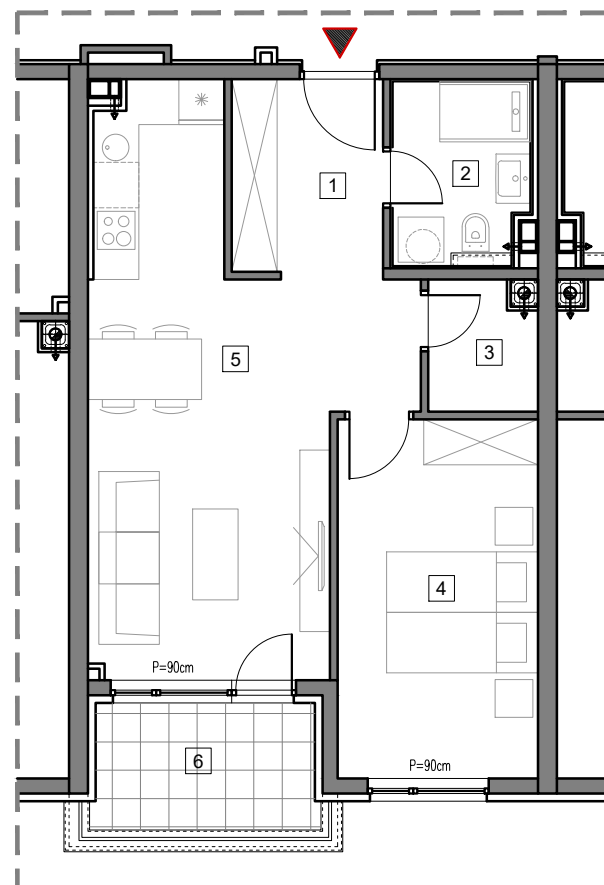


4. SPRAT



STAMBENO-POSLOVNI OBJEKAT "DOBRINJA"

STAN A409

1	HOL	5.1m ²
2	KUPATILO	4.3m ²
3	OSTAVA	2.3m ²
4	SOBA	12.4m ²
5	DNEVNA SOBA, KUHINJA I TRPEZARIJA	23.0m ²
6	LOĐA (75%)	3.7m ²

UKUPNO 50.8m²



BUTMIR