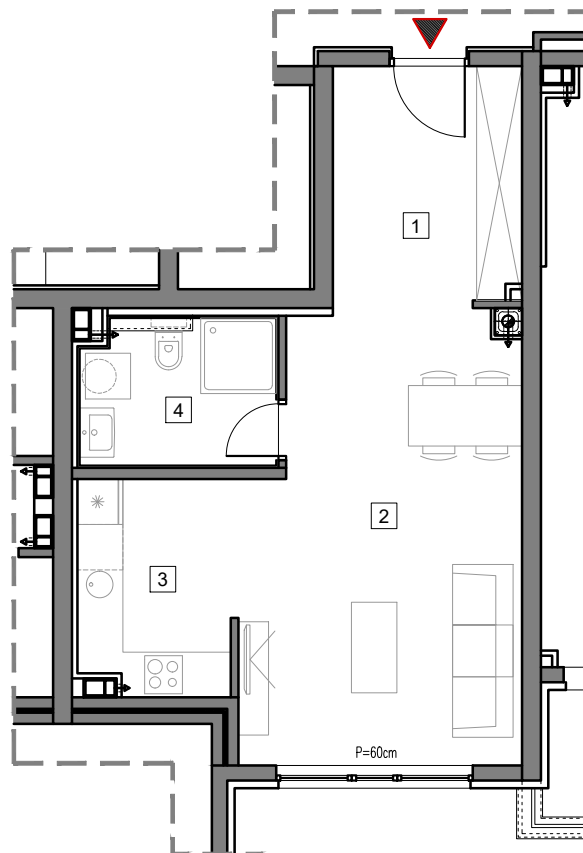


3. SPRAT



STAMBENO-POSLOVNI OBJEKAT
"DOBRINJA"

STAN A310

1	HOL	7.8m ²
2	DNEVNA SOBA I TRPEZARIJA	20.7m ²
3	KUHINJA	5.8m ²
4	KUPATILO	4.9m ²

UKUPNO 39.2m²

