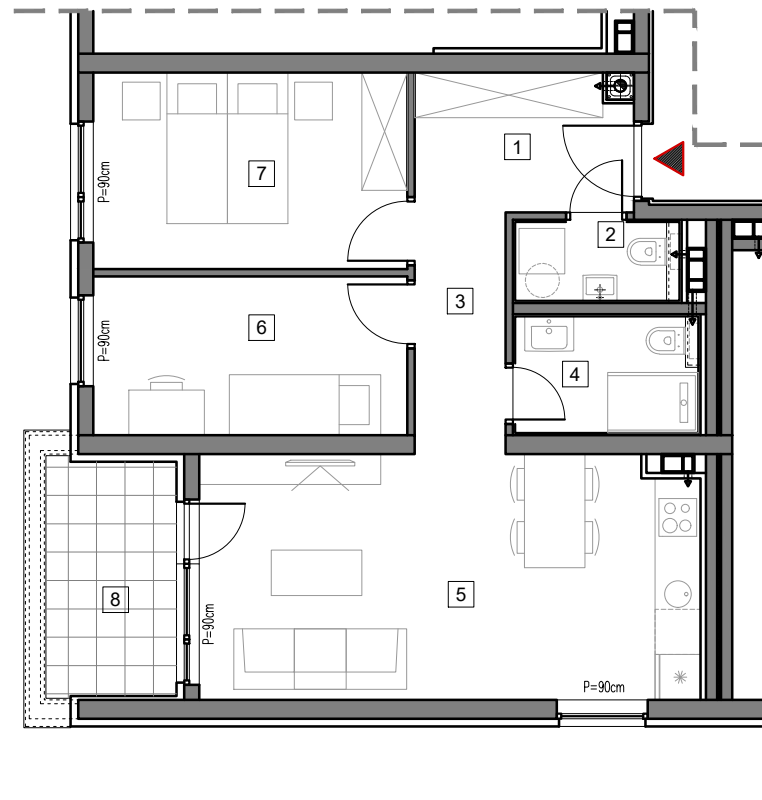


3. SPRAT



STAMBENO-POSLOVNI OBJEKAT "DOBRINJA"

STAN A302

1	HOL	5.1m ²
2	WC	2.3m ²
3	HODNIK	3.8m ²
4	KUPATILO	3.8m ²
5	DNEVNA SOBA, KUHINJA I TRPEZARIJA	21.0m ²
6	SOBA 1	8.5m ²
7	SOBA 2	10.6m ²
8	LOĐA (75%)	4.1m ²

UKUPNO 59.2m²



BUTMIR