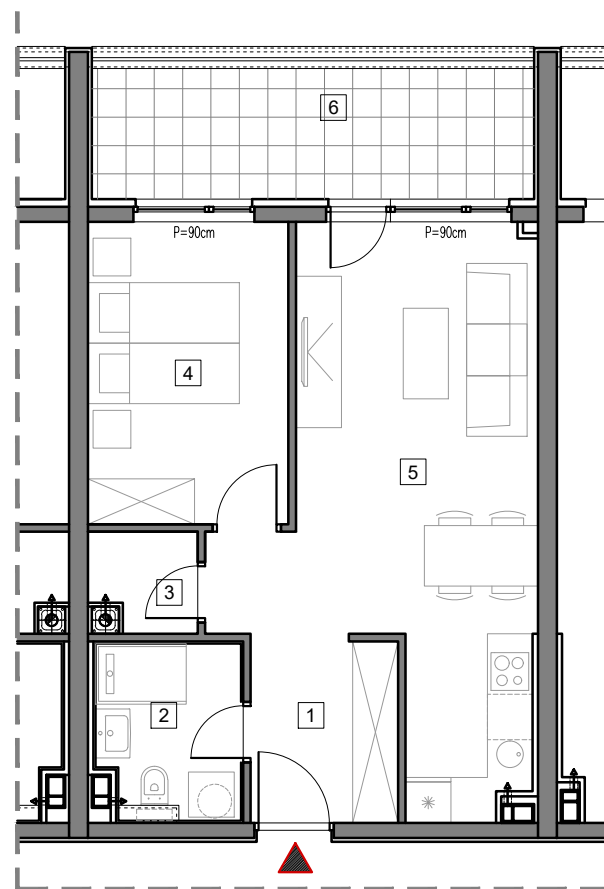


2. SPRAT



STAMBENO-POSLOVNI OBJEKAT "DOBRINJA"

STAN A207

1	HOL	4.7m ²
2	KUPATILO	4.3m ²
3	OSTAVA	1.7m ²
4	SOBA	10.4m ²
5	DNEVNA SOBA, KUHINJA I TRPEZARIJA	22.6m ²
6	LOĐA (75%)	7.6m ²

UKUPNO 51.3m²



BUTMIR