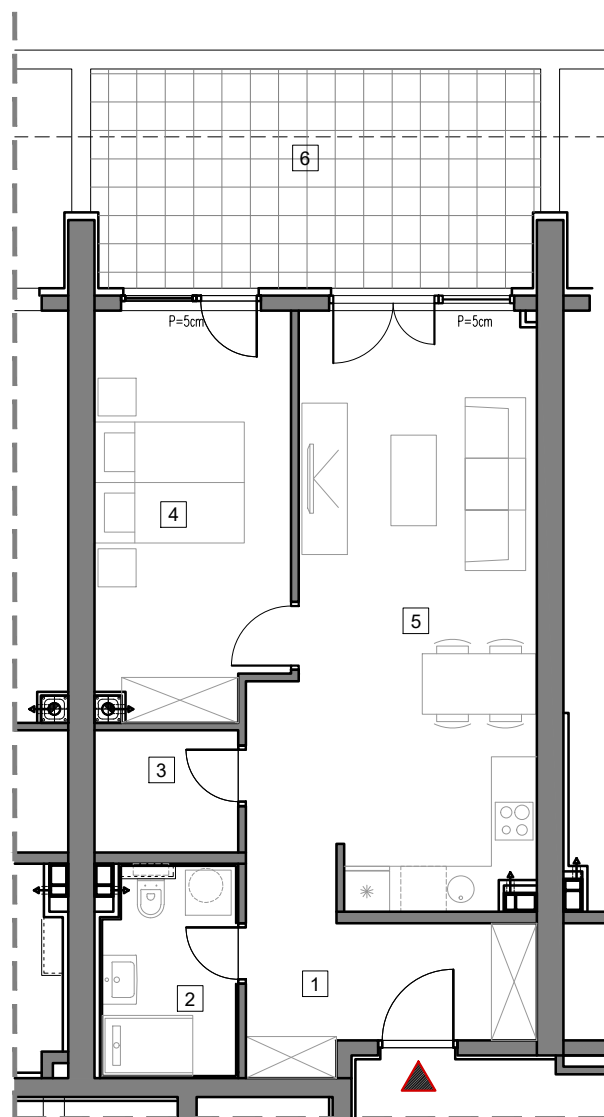


PRIZEMLJE



STAMBENO-POSLOVNI OBJEKAT  
**"DOBRINJA"**

**STAN A03**

1	HOL	7.7m <sup>2</sup>
2	KUPATILO	4.8m <sup>2</sup>
3	OSTAVA	3.0m <sup>2</sup>
4	SOBA	13.3m <sup>2</sup>
5	DNEVNA SOBA, KUHINJA I TRPEZARIJA	25.4m <sup>2</sup>
6	TERASA	10.1m <sup>2</sup>

**UKUPNO 64.3m<sup>2</sup>**



**BUTMIR**