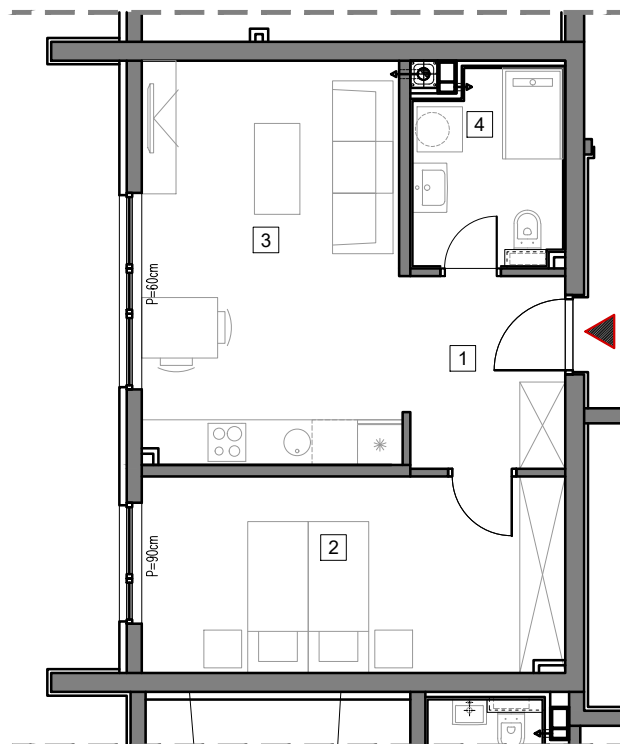


PRIZEMLJE



## STAMBENO-POSLOVNI OBJEKAT "DOBRINJA"

### STAN A01

1	HOL	5.3m <sup>2</sup>
2	SOBA	14.2m <sup>2</sup>
3	DNEVNA SOBA, KUHINJA I TRPEZARIJA	18.0m <sup>2</sup>
4	KUPATILO	4.9m <sup>2</sup>

UKUPNO 42.4m<sup>2</sup>



# BUTMIR